



WORKFORCE INVESTMENT BOARD
260 N. San Antonio Road, Suite C • Santa Barbara, CA 93110
(805) 681-4453 • FAX (805) 681-4656
www.SantaBarbaraCountyWIB.org

NEWS RELEASE
FOR IMMEDIATE RELEASE

DSS/WIB 6-21-1-9

DATE: **June 21, 2013**

News Media Contact:

Raymond L. McDonald, Executive Director

(805) 681- 4453

Karen L. Le Doux, Program Coordinator

(805) 681- 4760

PRESS RELEASE

Local Economy Continues to Prosper **as Unemployment Rate in Santa Barbara County Drops to 5.6 Percent**

The unemployment rate for Santa Barbara County decreased to 5.6 percent in May 2013, according to figures released today by the State Employment Development Department (EDD). This is down from a revised 6.0 percent in April 2013, and below the year-ago estimate of 7.5 percent. This is compared to an unadjusted unemployment rate for California of 8.1 percent and 7.3 percent for the nation during the same period.

Industry sectors in Santa Barbara gained 300 more jobs than last month, for a total of 3, 500 jobs for the month of May. The industry with the most amount of job growth included Leisure and Hospitality, and Professional and Business Services with 300 jobs each. Trade, Transportation and Utilities, and Government were second with 200 jobs. Educational & Health Services was third with 100 positions. Other industries like Mining and Logging, Construction, Manufacturing, Information, and Financial Activities remained unchanged.

Between May 2012 and May 2013, total employment in Santa Barbara County rose by 3,800 jobs or 2.0 percent. Some of the highlights for this period included:

- Industries posting substantial gains over the year included: Service providing (up 2.2% or 3,300 jobs), Private Service Providing (up 2.9% or 3,200 jobs), Professional & Business Services (up 8.0% or 2,000 positions), Administrative, Support and Waste Services (up 12.6% or 1,500 jobs).
- Educational and Health Services (up 3.7% or 800 positions), Health Care & Social Assistance (up 3.7% or 700 positions) and Health Care (up 3.8% or 600 jobs).
- State Government and State Government Education increased by 500 jobs each, in the other hand, Federal Government and Local Government each lost 200 for this period.
- Other industries posting substantial gains over the year included: Construction with 500 jobs or 7.6%, Goods Producing with 2.5% or 500 positions, Professional, Scientific and Technical Services with 400 jobs or 3.5%, and Wholesale Trade with 200 jobs or 4.8%.

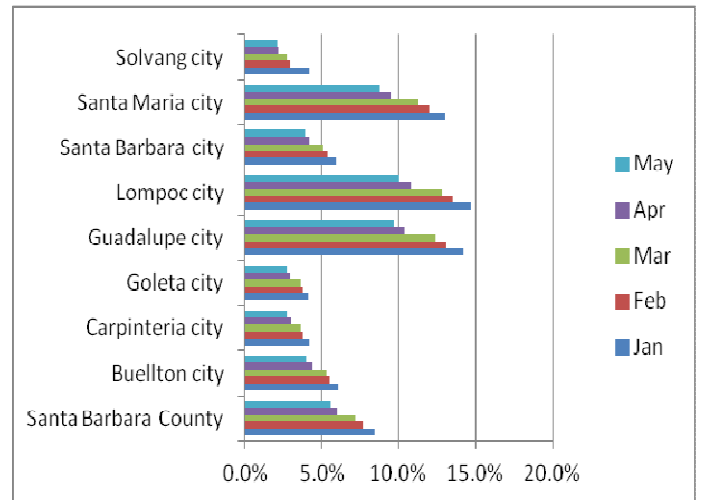
Santa Barbara County Workforce Investment Board (WIB) Executive Director, Raymond L. McDonald stated, "My first reaction is 'Wow! I really wasn't expecting this. We usually get a seasonal boost in hospitality-related employment

beginning in May, but the fact that the other sectors are holding—and Business Services continues its uptick—are very encouraging news. The last time we had an unemployment rate in the five-percent range was back in October of 2008 when we were at 5.8%.”

In our local cities, the City of Guadalupe joined the cities with single digit unemployment, falling from 10.4% in April to 9.7% in May. This leaves Lompoc as the only city in the county with double digit unemployment (which was 10% for the month). The City of Santa Maria finished the month with 8.8%. Other cities in the county continue to show healthy economies; behind Santa Maria was Buellton with 4.0% and Santa Barbara with 3.9%.

Complete Listing of Unemployment by cities:

2013	Jan	Feb	Mar	Apr	May
Santa Barbara County	8.4%	7.7%	7.2%	6.0%	5.6%
Buellton city	6.1%	5.5%	5.3%	4.4%	4.0%
Carpinteria city	4.2%	3.8%	3.6%	3.0%	2.7%
Goleta city	4.1%	3.8%	3.6%	2.9%	2.7%
Guadalupe city	14.2%	13.1%	12.4%	10.4%	9.7%
Lompoc city	14.7%	13.5%	12.8%	10.8%	10.0%
Santa Barbara city	5.9%	5.4%	5.1%	4.2%	3.9%
Santa Maria city	13.0%	12.0%	11.3%	9.5%	8.8%
Solvang city	4.2%	2.9%	2.7%	2.2%	2.1%



ABOUT THE WORKFORCE INVESTMENT BOARD OF Santa Barbara COUNTY

The Workforce Investment Board, www.SantaBarbaraCountyWIB.org, is dedicated to serving the workforce needs of businesses, adults, laid-off workers and youth throughout Santa Barbara County. The WIB is a public/private partnership created by the Federal Workforce Investment Act (WIA) and is staffed by the County of Santa Barbara.

Job seekers and employers can take advantage of free services at two Workforce Resource Centers (“One-Stops”) to help find work or new employees. Programs include employment services for job seekers, the latest labor market information and regional workforce research for businesses, as well as training that specialize in helping people gain the skills and confidence necessary to find and obtain a job. The One-Stop Shops are at 1410 S. Broadway in Santa Maria, (805) 614-1550, and 130 E. Ortega Street in Santa Barbara, (805) 568-1296. Online information is available at www.workforceresource.com.

Santa Barbara County Industry Clusters of Opportunity (designated by WIB):

- Healthcare
- Energy and Environment
- Building and Design
- Technology and Innovation
- Business Support Services
- Agriculture, Tourism, and Wineries

For more information please go to: www.SantaBarbaraCountyWIB.org or to www.labormarketinfo.edd.ca.gov for the full statewide unemployment figures.

~ ~ ~